

A Glimpse of 16 Early Signs of Autism by 16 Months



THE EARLY SIGNS OF AUTISM UNFOLD FROM 9 TO 16 MONTHS



The early signs of autism are easy to miss. Autism can be diagnosed by 18-24 months, but it's not usually diagnosed until 4-5 years. The early signs of autism can have a cascading effect on brain development and lead to significant social, language, and cognitive deficits, as well as challenging behaviors, if they're not caught early. By catching autism early, you can access intervention earlier and guide your child's success.

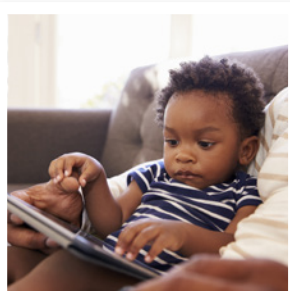
This Lookbook illustrates the 16 early signs of autism that unfold from 9 to 16 months – to help you detect autism before it's usually diagnosed. Visit [AutismNavigator.com](https://www.autismnavigator.com) to explore the Lookbook. You can also download, share, and print an 8-page version of the 16 Early Signs of Autism by 16 Months. Click on each of the 16 early signs below to see the photos of each in the Lookbook.



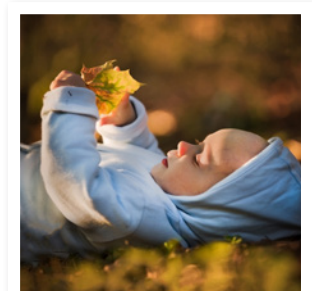
1. Hard to Get Your Baby to Look at You
2. Rarely Shares Enjoyment with You
3. Rarely Shares Their Interests with You
4. Rarely Responds to Their Name or Other Bids
5. Limited Use of Gestures such as Show and Point
6. Hard to Look at You and Use a Gesture and Sound



7. Little or No Imitating Other People or Pretending
8. Uses Your Hand as a Tool
9. More Interested in Objects than People
10. Unusual Ways of Moving Their Fingers, Hands, or Body
11. Repeats Unusual Movements with Objects
12. Develops Rituals and May Get Very Upset Over Change




13. Excessive Interest in Particular Objects or Activities
14. Very Focused on or Attached to Unusual Objects
15. Unusual Reaction to Sounds, Sights, or Textures
16. Strong Interest in Unusual Sensory Experiences



WHAT IF YOUR CHILD SHOWS SOME EARLY SIGNS OF AUTISM?

Any one of these signs may not be a problem. But in combination, they may signal a need to conduct a screening or diagnostic evaluation. As a general guide, if your child shows any 4 of these early signs, use our free online [Social Communication CheckUp](#) for children 9-18 months to screen your baby for autism. If your child shows 8 or more of these early signs, ask for a referral for a diagnostic evaluation. Talk to your child's doctor or teacher about any of these early signs or contact your local early intervention program. Share this Lookbook with them.

 **BABY NAVIGATOR — WHAT EVERY PARENT NEEDS TO KNOW**
Go to [BabyNavigator.com](https://www.babynavigator.com) to find out what every parent needs to know about early learning.
What you do and say can make all the difference.